



WEBFOOTER EXTRA

September 2019

Tillamook County Resort Towns



Bar View, Oregon

WEBFOOTERS POST CARD CLUB

PO Box 17240

Portland OR 97217-0240



www.thewebfooters.com

Tillamook County Resort Towns – Bar View – Playground by the Sea by Steve King



Auto Road near Bar View Beach.

Bar View, Oregon, is situated at the mouth of Tillamook Bay in northern Tillamook County. It is an unincorporated community, named in 1884 by L.C. Smith for its exceptional view of the sandbar at the entrance to the bay. The Postal Service always spelled Bar View as two words, never as “Barview.”

The Bar View community was established by the Ralph Ackley Land Company of Portland, Oregon in the very early 1900s. A 1909 brochure from the company promotes Bar View as a “Playground by the Sea.” Hundreds of lots were offered for sale. At the time, Bar View was only accessible from the south, at the end of an automobile road from Tillamook. With the completion of the Pacific Railroad and Navigation Co. (P.R.&N.) railroad in November 1911 which ran from Hillsboro to Tillamook, a wave of migration and development hit the stretch of beach north of Garbaldi between Tillamook Bay and Nehalem Bay.



Views of the Pacific Railway and Navigation Company railroad at Bar View, Oregon.



Known as Garibaldi Beach, it included Bar View, Twin Rocks, Rockaway and Manhattan Beach. The railroad route from Tillamook to Mohler was opened first. The first train, on July 4, 1910, included a stop at Bar View. Development for the tourist industry was rapid. A railroad depot was built at Bar View, along with a hotel, dance hall, stores and other buildings. Lots of camping sites and cottages were made available for rent.

As with most coastal inlets on the Oregon coast, getting into Tillamook Bay was a challenge for shipping, as there was a treacherous sandbar across the entrance. To facilitate coastal commerce, in 1910 planning was begun to build two jetties, but the approved plan consisted of building only the north jetty, at Bar View. Construction began in 1914, and it was completed with a length of 5,400 feet in October 1917. The south jetty was eventually built in three phases from 1969 to 1979.

During the construction of the north jetty, disaster befell Bar View. The jetty redirected the water currents to flow more directly in and out of the Bay with the tide. When a fierce late-November 1915 storm with high winds struck, much of Bar View was destroyed. On November 23, 1915, seven acres of Bar View were swept away, including the hotel and other structures, all the sandy beach, and many trees.



Aerial view of Bar View in 1915.



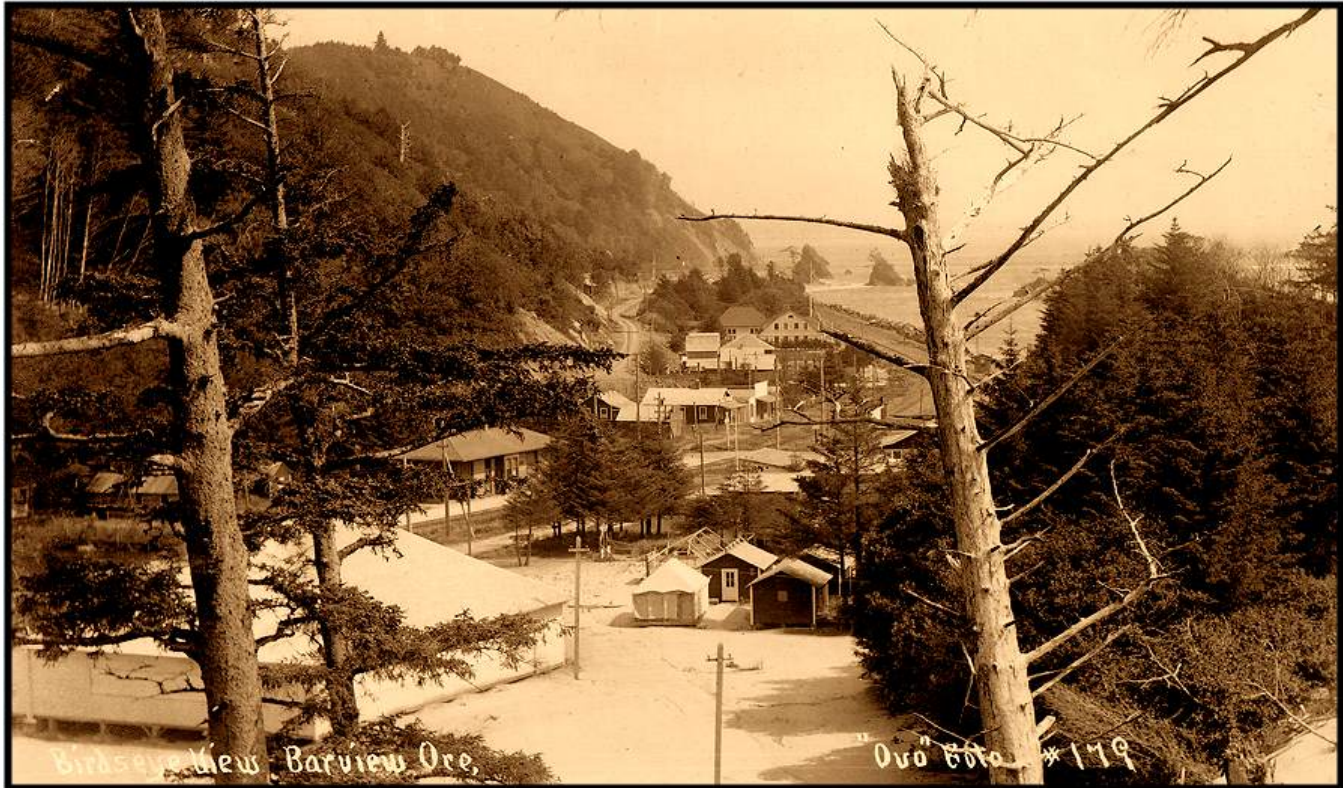
Street scene of Bar View showing the Bar View Grocery, location of the Bar View post office from 1916 to 1927. Photo courtesy of Mark Moore.

The original Bar View Grocery and post office was located near the south end of Lakeshore Drive. The post office was established September 13, 1913, with Frederick C. Robison as postmaster. The Post Office Department *Postal Bulletin* of June 8, 1916 (#11065) lists a site change for Bar View. The office moved 400 feet north. It is likely the grocery and post office building was moved to a more secure location because of the storm damage.

The new location for the Bar View Grocery and post office was at the northwest corner of the intersection of Lakeside Drive and Cedar Street. Frederick C. Robison continued as postmaster at the new location until April 21, 1920. The post office operated at this site for 11 years under four postmasters, until it moved for a third and final time in 1927.

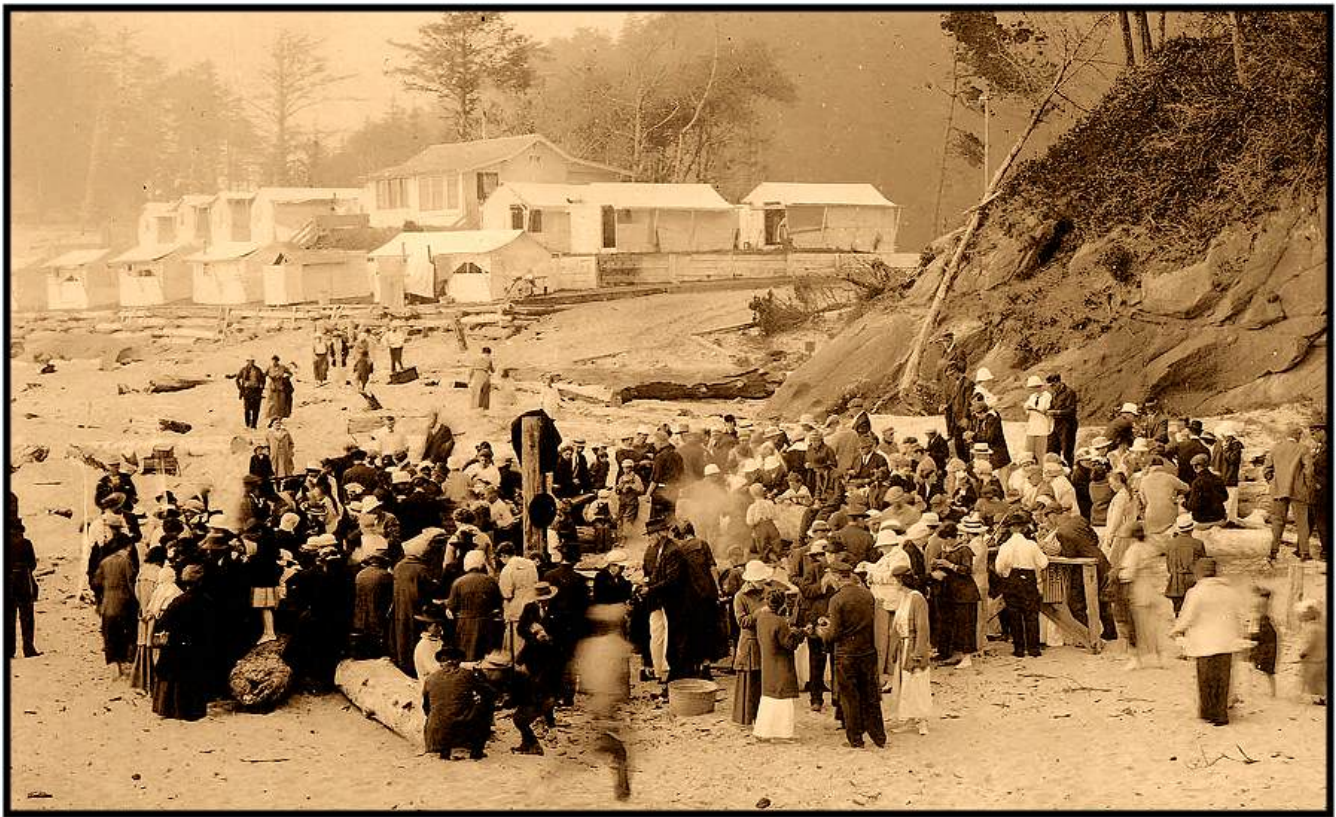
The October 10, 1927 *Postal Bulletin* (#14508) announced another site change for the Bar View post office, effective October 26, 1927. The move was 125 feet east, which places the location at the southwest corner of the intersection of Cedar Street and Highway 101. This is the location of the present Bar View Jetty Store. It is likely the building itself was moved for a second time. Mrs. Cecil M. Hayes became postmaster October 26, 1938 and served for almost six years.

The Bar View post office was discontinued December 31, 1932 with mail to Garibaldi, but was re-established February 13, 1934. Bar View was caught in the massive post office closures of the Eisenhower administration that included the other northern Tillamook County offices of Twin Rocks, Manhattan Beach, Brighton and Mohler. Bar View post office was discontinued March 15, 1954, but some of its functions remained as it was converted to a Rural Station of Rockaway. The Rural Station operated another four and one half years until it was closed on September 30, 1958.



Birdseye view of Bar View, Oregon. The white building in the lower left is the dance hall. The furthest away is the U.S. Life-Saving Station.





Beach scene at Bar View, Oregon.

The Bar View Grocery is still in existence, but it has been extensively remodeled, and the name has been changed to the Bar View Jetty Store. It is currently owned by Rick and Marilyn Hurliman. When they bought the business in 2003 the post office was still in place at the back of the store, looking as it did when it closed in 1958. Since then the space has become a part of the store.

Bar View continues to be “The Playground by the Sea,” as advertised in 1909. Many houses in Bar View are vacation or second homes. Tillamook County operates the large Barview Jetty County Campground, which has about 300 sites on the sands accreted behind the north jetty. The community has been served by the Bar View Grocery for over 100 years, but postal needs are now accommodated by the offices at Garibaldi or Rockaway Beach.

This article was adapted from an article that Steve King wrote for The Oregon Country, which is published four times a year by the Pacific Northwest Postal History Society.