



WEBFOOTER EXTRA

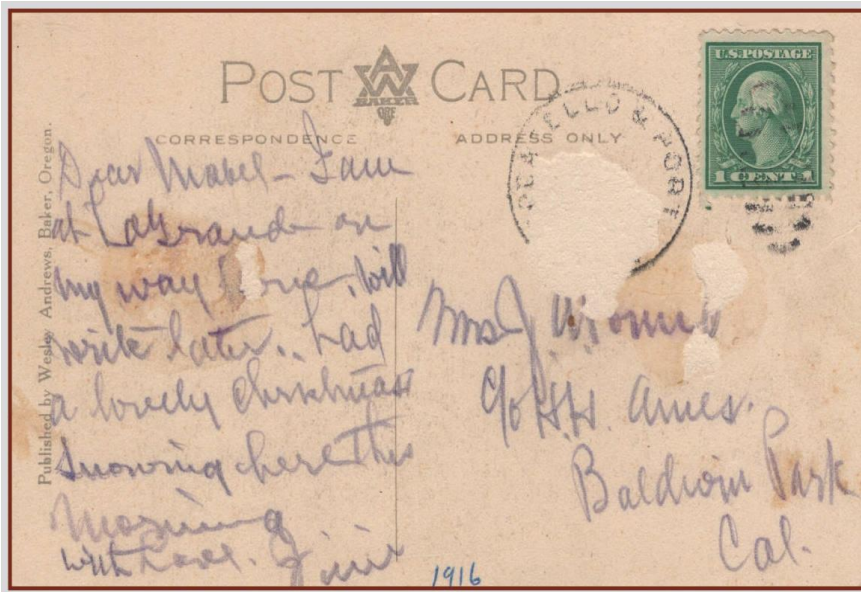
DECEMBER 2024

SCENIC CHRISTMAS POSTCARDS
FROM THE COLUMBIA RIVER GORGE
BY MARK MOORE



The Ferry Crossing the Columbia River on the upper Columbia.

COVER POSTCARD:



By examining the back of this postcard, we know that it was published by Wesley Andrews (1875-1950) when he operated a postcard studio in Baker, Oregon from 1904 to 1929. He moved to Portland and operated until 1940.

The card must have been in an album and was torn out at some point as pertinent details from the postmark are missing, such as the date and train number, but the cancellation is from the Pocatello & Portland Railroad RPO. The message indicates that it was likely mailed on the train in or near

LaGrande, Oregon, circa 1910 to 1920.

SCENIC CHRISTMAS POSTCARDS FROM THE COLUMBIA RIVER GORGE



Bridal Veil Falls at Bridal Veil, Oregon published by Portland Post Card Co. Postmarked December 28, 1911 in Hood River, Oregon.

Wesley Andrews was one of the earliest publishers of Scenic Christmas Postcards. He had photographed many views of towns and scenes in the Northwest from Oregon, Washington and Idaho as well as Yellowstone. From his photo studio in Baker, Oregon, he decided to use some of those photos as a postcard on a postcard.

He hand-colored those photos and added Christmas and New Years Greetings. Then he dressed them up with holly, wreaths, ribbons, flowers, fir boughs, bells, birds, pinecones and mistletoe. Sometimes, Santa Claus, Cherubs and Indian Children were also added. Then he had them printed by lithographers in Germany.

Other regional postcard publishers soon followed Wesley Andrews' lead, including Richard Behrendt of San Francisco, J.K. Gill of Portland, Lowman & Hanford of Seattle, Edwin Mitchell of San Francisco, Pacific Novelty Company of San Francisco, Portland Post Card Company, Patton Brothers of Salem, and Scheff Brothers of San Francisco.



Castle Rock, Columbia River, published by Portland Post Card Company circa 1911. Postally unused.



Cape Horn, Showing Tunnel, published by Portland Post Card Company. Postmarked Dec. 18, 1912 in Portland.



Pillars of Hercules published by Pacific Novelty Company, San Francisco, circa 1912. Postally unused.



Cascade Locks, Oregon published by Portland Post Card Company. Postmarked 1914.



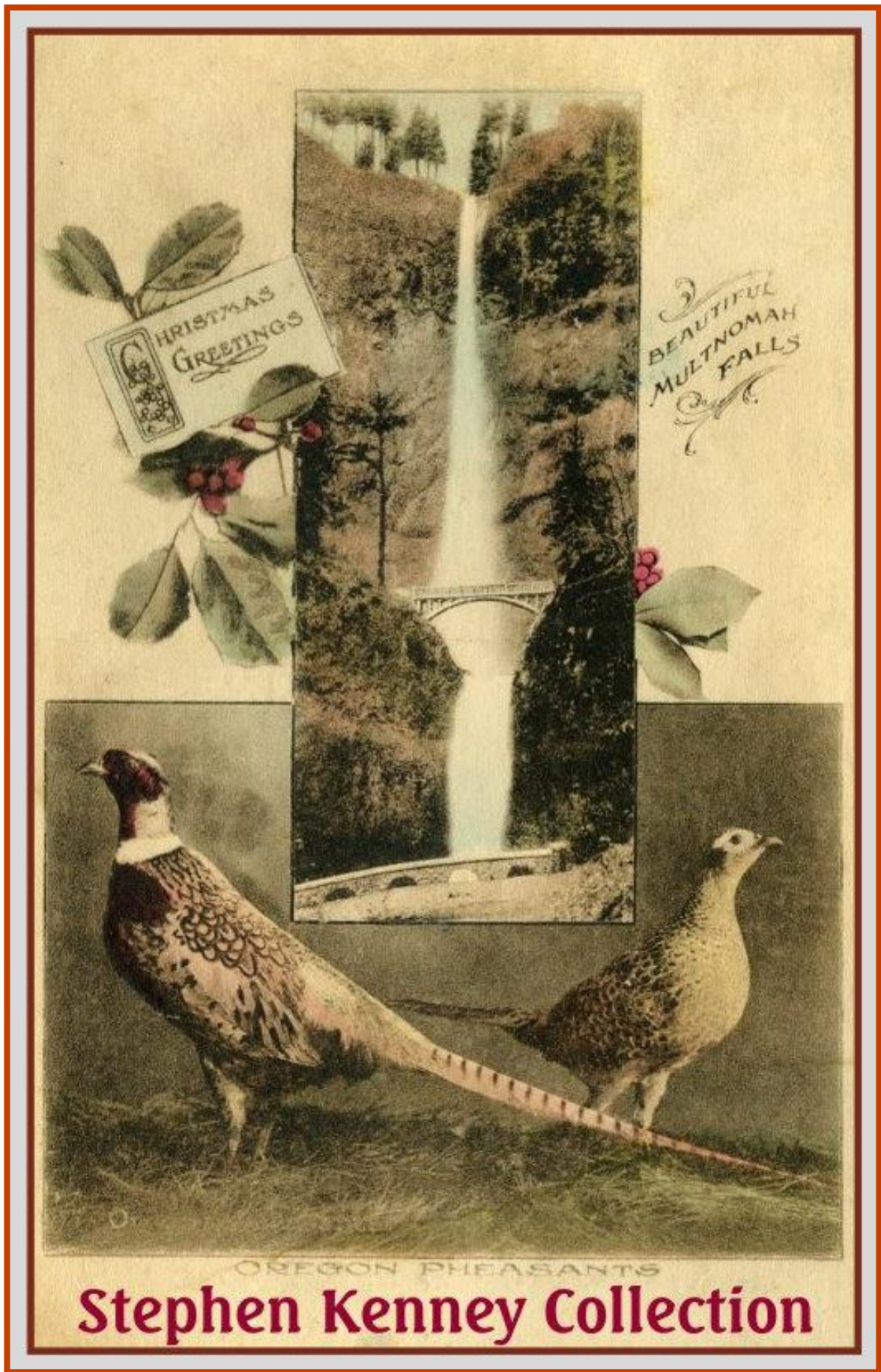
Indian Camp on the Columbia River at Astoria, Oregon published by Patton Post Card Company, Salem, circa 1911. Postally unused.



Multnomah Falls, Oregon published by Richard Behrendt, San Francisco. Postmarked Dec. 23, 1920 in Portland.



Tongue Point at Astoria, Oregon published by Richard Behrendt, San Francisco. Postmarked Dec. 23, 1910 in Astoria.



Stephen Kenney Collection

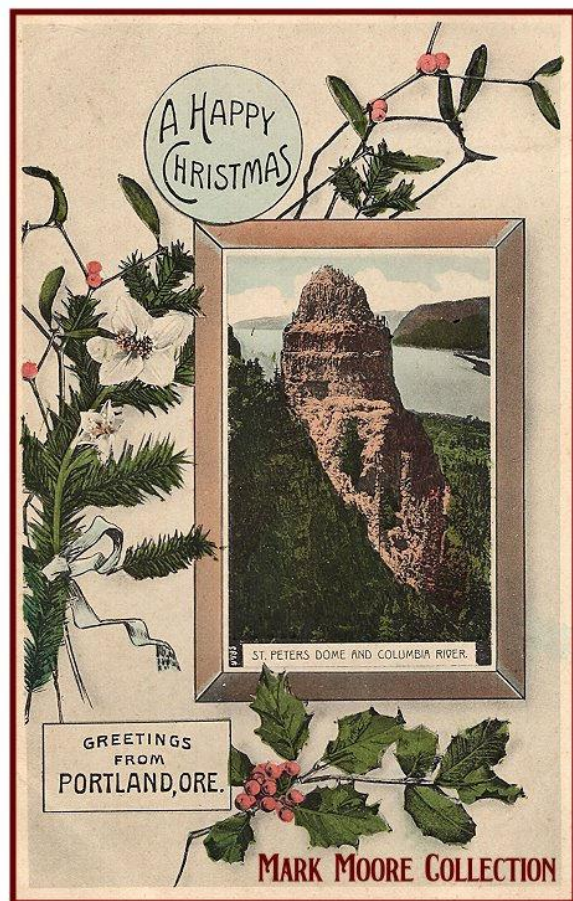
Oregon Pheasants at Beautiful Multnomah Falls, Oregon.



Steamer Bailey Gatzert on the Columbia River, Oregon published by Portland Post Card Company. Postmarked Dec. 15, 1912 in Portland.



"W.A." Wesley Andrews, BAKER, ORE back.



St. Peter's Dome, Pacific Novelty Company, San Francisco. Postmarked: Dec. 30, 1912 in Hillsdale, OR.



WEBFOOTERS POST CARD CLUB

PO Box 17240
Portland OR 97217-0240



For the latest news, visit our website:



THEWEBFOOTERS.COM

email: webfootersinfo@gmail.com

Find us on Facebook 
